



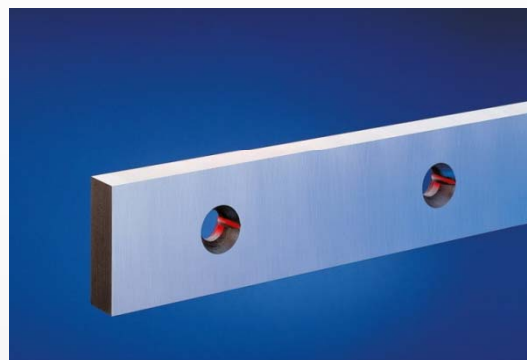
NEWSLETTER : The latest news in the rubber industry range

New coating method for steel cord shears prevents adherence of rubber

IKS Klingelberg shear blades are used in the production process of car tires.

A tire consists of different components. From the outside, a tire is made up of a cover, sidewall, and heel.

In the inside, these elements are supported by the carcass.



The carcass is covered with a bracing ply which is made of several layers of rubber-lined steel wire fabric (steel breaker tire).

The threads in these bracing plies are in an acute angle to one another. The tire is thereby provided with resistance, fitness for high speed, and durability.

Bracing plies are cut by means of shear blades. In doing so, rubber often adheres to the blade which may result in considerable impairment of the cutting process.

IKS Klingelberg took care of this problem and developed a new coating method which is particularly tailored to steel cord shears and minimizes the adherence of rubber to the tool and thus guarantees a trouble-free cutting process.

IKS Klingelberg delivers steel cord shears in solid steel and carbide-tipped design.

Do not hesitate to contact our competent team of experts for technical details!

We would be pleased to give you our expert advice and to provide further information!

Contact

Mr. Volker Kölsch

Vice President Plastic, Rubber and Recycling

Phone: 49 (0) 2191-969-219

VKoelsch@interknife.com