



KSF MICROPLAN POLISHING DEVICE



IKS KLINGELNBERG GROUP · THE KNIFE MANUFACTURERS



KLINGELBERG



BÖHLER-MILLER

KSF MICROPLAN POLISHING DEVICE

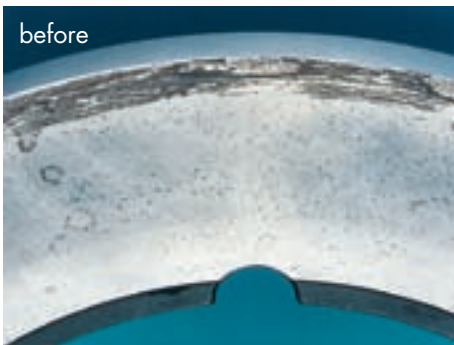


KSF MICROPLAN POLISHING DEVICE

Manufactured specifically for the removal of material build-up on the sides of rotary slitter knives without any measurable removal of material from the knife, thus leaving the thickness unchanged. Capable for handling outside diameters up to max. 450 mm.

The polishing time is infinitely variable and can be preset to any length of time from 0-100 seconds, however other times can be adjusted as required. The speed is infinitely variable and preset for a range from 0-500 rpm, however other higher speeds can be set as required.

The polishing pressure is adjustable by an infinitely variable pneumatic control. The machine is supplied complete and ready for use. A polishing belt is supplied with the machine. In addition 2 drive plates 280 mm and 380 mm outside diameter are included in the supply.



MACHINE INSTALLATION

- unpack and remove all transport clamps
- position machine where required for use
- place spirit level on the levelling plate
- level the machine by means of the adjustable feet (M12 nuts) using a 19 mm open ended spanner
- put counterweight to the steel cable located in the machine
- remove wooden support

ASSEMBLY

- the machine is supplied completely assembled.

MACHINE OPERATION

1. Main isolator is switched „on“
2. Unlock emergency stop switch
3. White indicator lamp on the push button panel switches on
4. Place slitter knife on working surface (lapping paper)
5. Manual / auto switch to manual or auto as required

Detailed instructions for operating the machine are supplied.



MANUAL OPERATION

1. Operate switch „Rotate“ and hold
2. Set required speed by operating „speed“ control knob and then release „Rotate“ switch
3. Set air pressure to the required level
4. Press „Lower/Start“ push buttons at the same time and hold
5. Work head will lower on the work piece
6. With the Lower/Start push buttons pressed operate switch „Rotate“ and hold - drive disc and work piece now rotate
7. After the polishing work has been completed release all push buttons
8. The work head lifts off and the rotation stops

AUTOMATIC OPERATION

1. Before going into automatic operation ensure that the values for the air pressure and rotating speed are set manually
2. Adjust the polishing time required by setting the knob „Polishing time“
3. Switch Manual/Auto to „Auto“ position
4. Press both push buttons „Lower/Start“ with both hands and hold
5. Work head will lower on to work piece
6. The motor will switch on to the preset rotating speed, now release both Lower/Start push buttons
7. The polishing head operates until the end of the preset time, then the speed automatically slows to stop and the work head lifts off



STOP BUTTON

By pressing either one of the two Stop buttons the automatic sequence can be ended at any time

EMERGENCY STOP

By pressing the Emergency Stop button the rotation will be stopped and the work head lifts - the complete control will switch to current free mode

READJUSTMENT OF THE LAPPING PAPER

Loosen clamp and turn the handwheel to the left sufficiently. Tighten clamp.

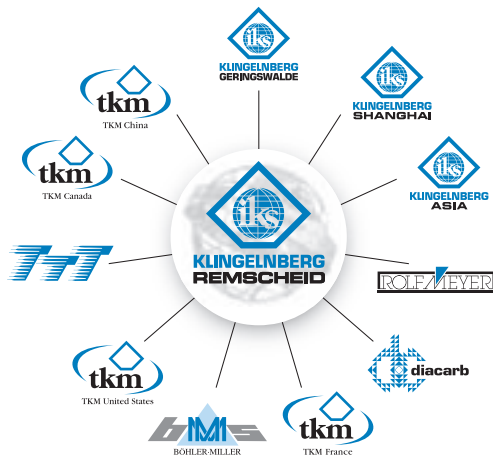
Technical Data

Polishing Device **Typ 550/140**

Max. connection output :	1500 W
Motor output :	550 W
Air connection :	6 - 8 bar
Electric supply voltage :	220V/50Hz
Timer :	0 - 100 sec.
Infinitely variable speed (high speeds also available)	0 - 500 rpm
Machine weight :	530 kg

Working range

Machine dimensions :	900 x 900 mm
Polishing table :	550 x 550 mm
Max. diameter :	450 mm
Max. height :	125 mm
Stroke height :	140 mm



DIE IKS KLINGELBERG GRUPPE THE IKS KLINGELBERG GROUP



- | | | |
|---|--|---|
|  | MESSER FÜR DIE
PAPIER-INDUSTRIE | KNIVES FOR THE
PAPER-INDUSTRY |
|  | MESSER FÜR DIE
METALL-INDUSTRIE | KNIVES FOR THE
METAL-INDUSTRY |
|  | MESSER FÜR DIE
HOLZ-INDUSTRIE | KNIVES FOR THE
WOOD-INDUSTRY |
|  | MESSER FÜR DIE
KUNSTSTOFF-, GUMMI-
& RECYCLING-INDUSTRIE | KNIVES FOR THE
PLASTIC, RUBBER &
RECYCLING INDUSTRY |

Please contact IKS Klingelberg or Böhler Miller
for further contacts all over the world!



IKS KLINGELBERG GMBH

Headquarters & Sales
In der Fleute 18
D-42897 Remscheid
Germany
T: +49 (0) 2191-969-0
F: +49 (0) 2191-969-111
E-Mail: info@interknife.com
www.interknife.com



IKS Klingelberg GmbH, Remscheid



BÖHLER MILLER Messer u. Sägen GmbH

Sales & Production
Waidhofner Straße 11
A-3333 Böhlerwerk
Austria
T: +43 (0) 7442 / 601 - 0
F: +43 (0) 7442 / 601150
E-mail: info@bmms.at
www.bmms.at



Böhler-Miller Messer u. Sägen GmbH, Böhlerwerk



IKS KLINGELBERG GERINGSWALDE GMBH

Production
Mittweidaer Straße 44
D-09326 Geringswalde
Germany
Tel. +49 (0) 37382-846-0
Fax +49 (0) 37382-846-24
E-Mail: iksgw@interknife.com
www.interknife.com



IKS Messerfabrik Geringswalde GmbH, Geringswalde

IKS KLINGELBERG GROUP · THE KNIFE MANUFACTURERS

 DIVISION METAL

